

## The Need:

Customers need to drill holes 1.5 inch (38.1 mm) diameter and larger, with tight clearance restrictions.

## The Challenge:

Tight side and/or overhead clearance restrictions eliminate the use of large capacity mag-base drills. Machining applications call for drilling holes up to 2.5 inches (63.5 mm) in diameter in a single pass, step drilling or roto-broaching up to 4.5 inches (114.3 mm) and back-spot facing up to 5.2 inches (132.1 mm). Tight side clearances require the hole to be within 2.5 inches (63.5 mm) of an obstruction with overhead clearances as low as 15 inches (381 mm).

The lack of an adequate solution forces the operator to use an improvised corner drill for the application. This results in increased labor to do the job (sometimes 2-3 more labor hours), and can also present several issues including:

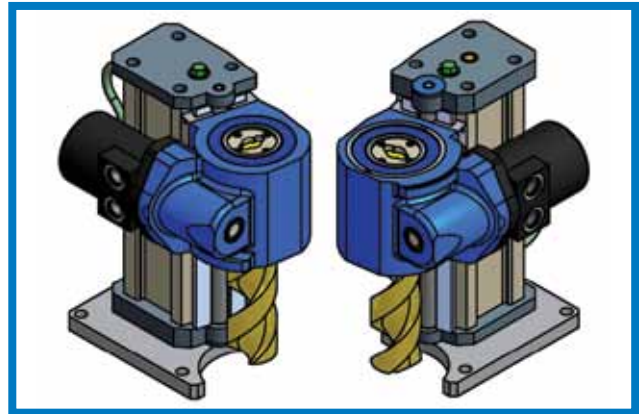
- Finding a way to safely restrain the drill torque
- Welding-in supports to hold the drill vertically during the drilling operation
- Having to use a hex nut, screw and wrench to feed the drill through the hole
- Being able to step drill even holes less than 2.5 inches (63.5 mm) in diameter while working within tight spaces
- Safety issue as a result of increased likelihood of operator injury due to poor working ergonomics

## The Answer:

Operator safety and ergonomics are improved while time on the job is cut by 30 to 60% by having a tool specifically designed for the application.



Compact Drilling Machine



Technical drawing/rendering of  
the Climax Drilling Machine

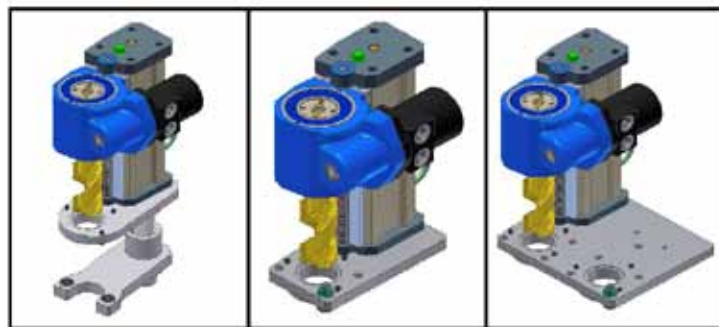
## About Climax Portable Machine Tools, Inc.

Based in Oregon, Climax Portable Machine Tools, Inc. is a strategic world-class provider of comprehensive, on-site machining solutions. The company offers specialized engineering consulting services, customized training programs and a full line of portable machine tools enabling customers to efficiently perform on-site machining for applications in the shipbuilding, power generation, and service and engineering sectors. Climax Portable Machine Tools pioneered the portable machine tools concept. As the world's largest supplier of portable machine tools, it offers standard and custom-built solutions and serves the domestic and international markets through its own international offices and licensed representatives in 26 countries.

# SPECIFICATIONS, MOUNTING OPTIONS, ACCESSORIES

	US	Metric
<b>Machine Performance Ranges</b>		
Capacity		
Drilling	2.25 inches in a single pass	57.2 mm in a single pass
Rotobroach	4.5 inches	114.3 mm
Back spot facing	5.1 inches max.	129.5 mm max.
Axial Stroke Range (configurable by application)	6 - 20 inches	152.4 - 508.0 mm
Feed Rate	0.3 - 2.5 inches/minute	7.62 - 63.5 mm/minute
<b>Hydraulic Drive</b>		
Max drill speed	260 rpm @ 10 gpm with 2.2 inch <sup>3</sup> motor	260 rpm @ 37.9 l/min with 36.1 cm <sup>3</sup> motor
Max Torque	424 ft-lb @ 1600 psi	574.9 N•m
Overall Gear Reduction	4:1	4:1
<b>Measures (based on 7" axial stroke machine)</b>		
Overall Dimensions (H x L x W)	14.6 x 11.42 x 7.8 inches	370.8 x 290.1 x 198.1 mm
Drill Weight, approximate	50 lbs	22.7 kg

## Drilling Machine Mounting Options



## Available Accessories

Coolant Mister  
56524

Supplies cooling mist directly to the cutting edge through the Rotary Coolant Adapter.

Mister with fittings for Rotary Coolant Adapter  
60283

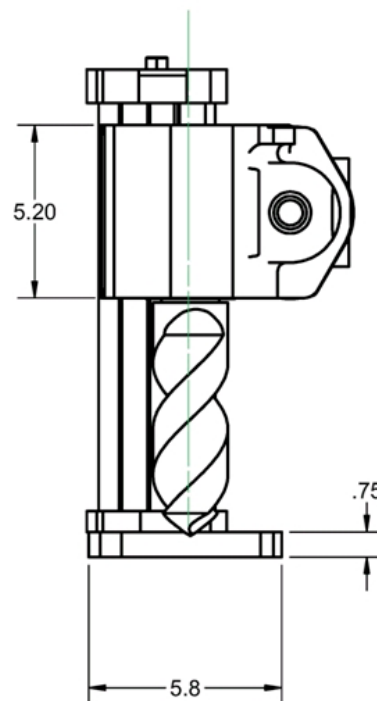
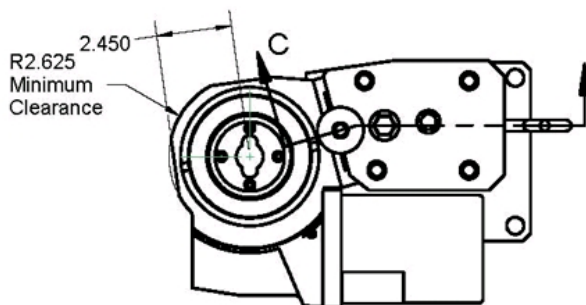
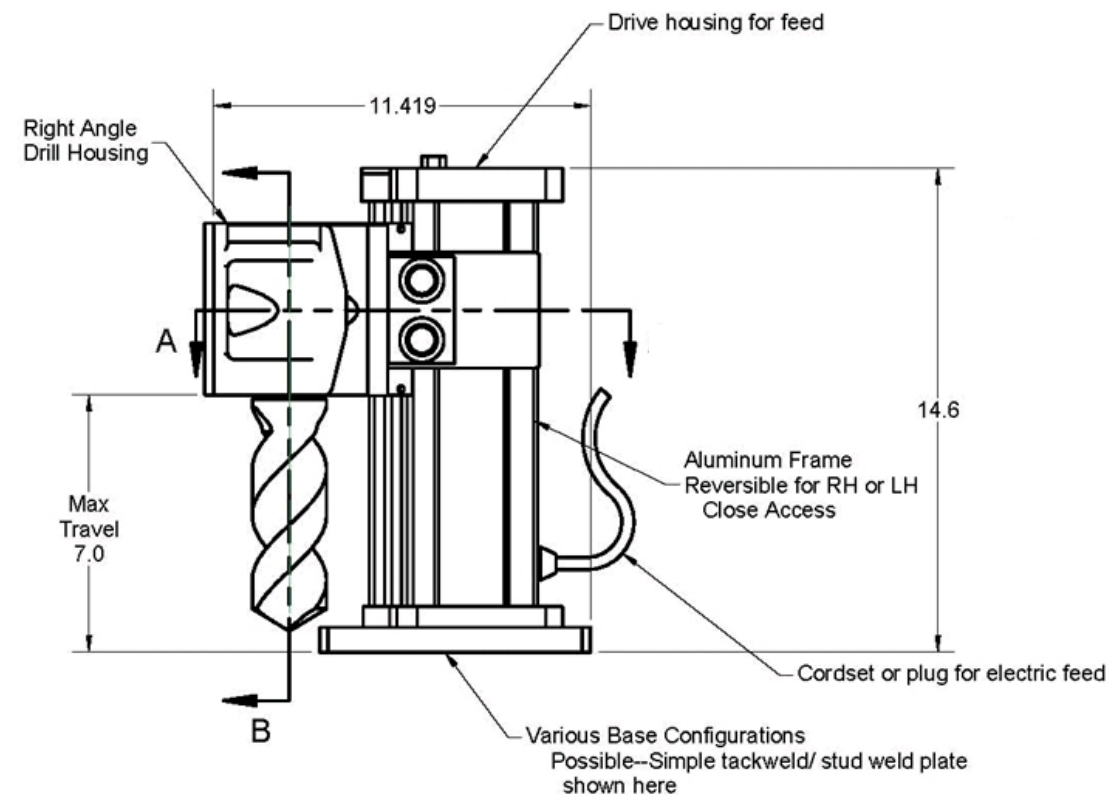
New-Lube Coolant  
59804

Coolant for mister, 1 gallon (3.8L)

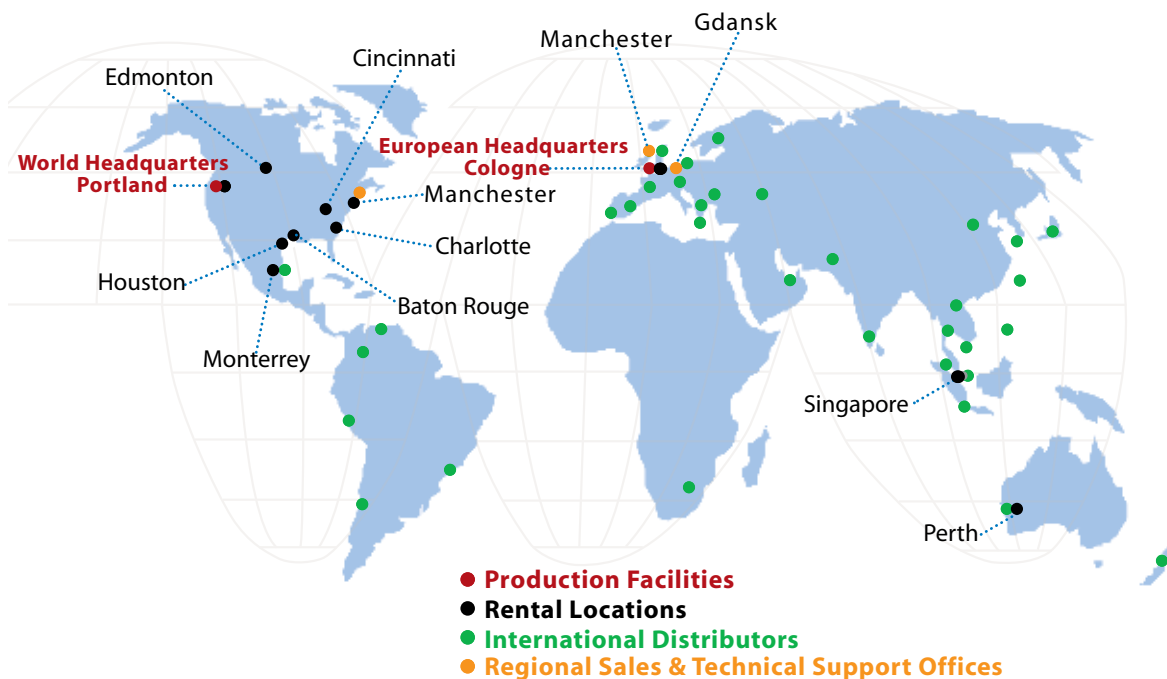
表記の寸法値はすべて、あくまで参考です。正確な寸法については、当社または当社代理店にお問い合わせください。仕様は、予告無しに変更されることがあります。  
この機械には、有害なEMCや紫外線あるいは他の放射線障害を引き起こす可能性のあるシステムや部材は使用していません。本機はレーザーを使わず、気体や粉塵等の危険物も排出しません。

# OPERATIONAL DIMENSIONS

Dimensions in Inch (mm)  
for 7 inch (177.8 mm) axial stroke machine



# CLIMAX GLOBAL LOCATIONS



## Call Climax for:

### On-site Training

Need some refresher courses in setting up and operating your Climax machine tool?

### Special Projects

Climax has been solving complicated on-site machining and welding problems for our customers since 1964.

### Rentals

With seven locations in North America, two in Europe and two in Asia, you are never far away from a Climax portable machine tool.

Connect with us:  

### World Headquarters

2712 E. Second Street  
Newberg, Oregon 97132 USA  
Worldwide Telephone: 1.503.538.2185  
N. America Toll-Free: 1.800.333.8311  
Fax: 1.503.538.7600  
Email: [info@cpmt.com](mailto:info@cpmt.com)

### European Headquarters

Am Langen Graben 8  
52353 Düren, Germany  
Telephone: (+49) (0) 2421.9177.0  
Fax: (+49) (0) 2421.9177.29  
Email: [info@cpmt.de](mailto:info@cpmt.de)